

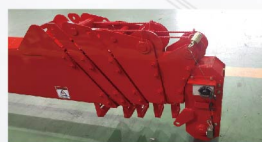
12TON TRUCK MOUNTED CRANE



ZTON 1205/1206

Korea's leading special vehicle manufacturer

Options



Overwinding Alarm



Oil Cooler



Overloading Prevention System



Overwinding Prevention System



ZTON1205/1206



Lifting capacity/Working height (kgf/m)

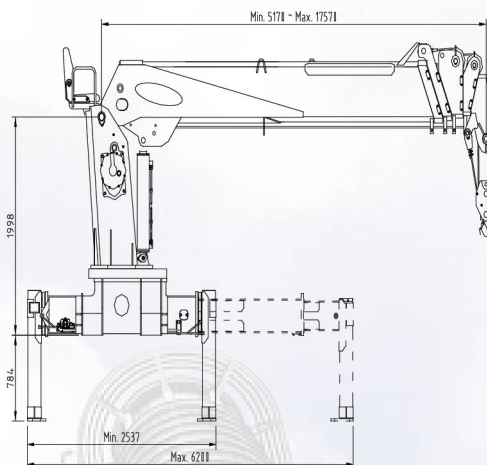


Specification

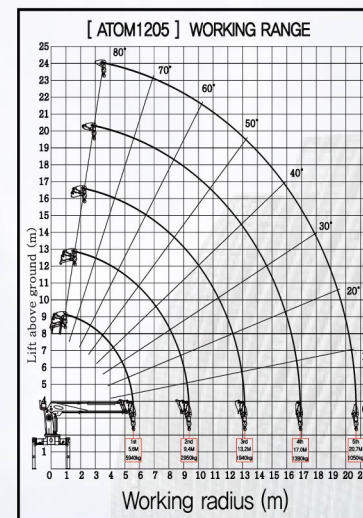
DESCRIPTION	UNITS	ZTON1205	ZTON1206
Lifting Capacity	ton-meter	36.3	38
Lifting Capacity / Outreach	kg/m	12,000 / 2.5	12,000 / 2.5
		5,940 / 5.6	6,500 / 6.5
		2,950 / 9.4	3,500 / 10.4
		1,940 / 13.2	2,150 / 14.3
		1,390 / 17.0	1,500 / 18.2
		1,050 / 20.7	1,100 / 22.1
Working Radius	m	20.7	26
Max. Lifting Height	m	23.0	28.8
Max. Working Height	m	24.5	29.8
Rated Oil Flow	cc/rev	80 x 80	80 x 80
Working Pressure	kg/cm ²	200 / 210(Winch)	200 / 210(Winch)
Shape Of Boom		Hexagonal box construction, 5 section boom with 2extension cylinder	Hexagonal box construction, 6 section boom with 3extension cylinder
Boom Length	m	Min. 5.85 ~ Max. 20.97	Min. 6.935 ~ Max. 26.375
Boom Extending Speed	m/sec	15.12 / 32	19.44 / 53
Boom Raising Speed	°/sec	0 ~ 80 / 20	0 ~ 80 / 25
Slewing Angle	°	360° continuous	360° continuous
Slewing Speed	r.p.m	2.0	1.8~2.0
Wire Rope	Ø x m	Hercules 19x7 Ø14 x 100m	Hercules 19x7 Ø14 x 100m
Hook Speed	m/min	15 (4th layer / 4 fall lines)	15 (4th layer / 4 fall lines)
Winch Type		2 speed winch, hydraulic motor driven, planetary gear reduction with hydraulic brake	2 speed winch, hydraulic motor driven, planetary gear reduction with hydraulic brake
Slewing Gear Type		Hyd. motor driven, combined type of planetary gear and worm gear speed reduction with hydraulic brake	Hyd. motor driven, combined type of planetary gear and worm gear speed reduction with hydraulic brake
Outrigger system	Front	Type	H-type, two stage horizontally & Vertically Hydraulic operated
		Span	m Max. 6.2
	Rear	Type	H-type, single stage horizontally & Vertically Hydraulic operated
		Span	m Max. 4.7
Truck chassis, recommended (pay load)	ton	11.0 above	14.0 above
Standard Safety Devices		1. Pressure relief valve for hydraulic circuit 2. Counter balance valves for raise and telescope cylinder 3. Pilot check valves for vertical outrigger cylinder 4. Hydraulic brake for slewing reduction gear	5. Mechanical brake for winch reduction gear 6. Pressure relief valve for boom and outrigger cylinder 7. Hook safety latch / Alarm buzzer 8. Over-winding prevention system
Option		1. Over-winding prevention system	2. Overload prevention system Alarm buzzer 3. Oil Cooler

*Above specification may be changed without notice due to improvement.

Layout



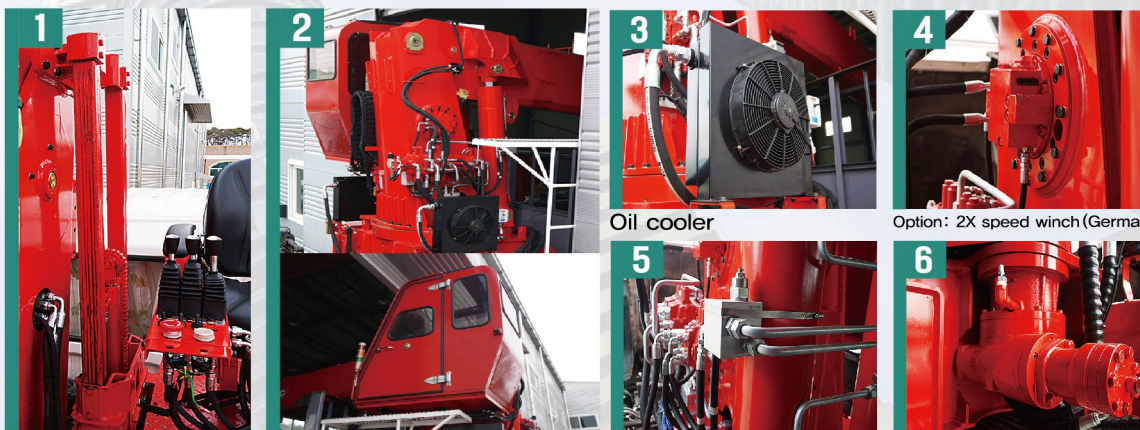
WORKING RADIUS



WORKING RADIUS (M)	BOOM LENGTH			
	5.85M	6.63M	13.41M	17.19M
2	12000	11700	1719M	20.97M
3	10310	8510	7970	3360
4	8510	6780	6270	3360
5	7240	5700	5210	3360
6	65940	4950	4480	3360
7	4380	3960	3360	2700
8	3820	3540	3290	2700
9	3430	3200	2980	2700
10	2950	2930	2720	2560
11	2690	2500	2350	
12	2450	2320	2170	
13	2120	2150	2020	
14	1940	2010	1890	
15	1860	1860	1770	
16	1710	1660		
17	1390	1560		
18	1460			
19	1370			
20	1260			
21	1050			

CAUTION
 1. Rated loads shown in the chart are derived under the condition that all outriggers are fully extended on solid and well levelled ground and the vehicle is well levelled on the ground.
 2. Rated loads shown in the chart are based on the crane strength rather than stability.
 3. Rated loads shown must be reduced in accordance with vehicle weight and loaded condition of truck, crane mounting position, wind, ground condition and operating speed.
 4. Rated loads are to be considered based on 6-tell wire rope.
 5. The weights of hook(100 kg), slings, and any accessories attached to the boom or lading must be deducted from the above rated loads in the chart.

Details



1 Moving Top seat

2 Option: Cabin type body

3 Derrick over-center valve

4 Double swig reducer